

TOMORROW'S VISION, OPERATIONAL TODAY

A precise Augmented Reality Solution for the manufacturing floor



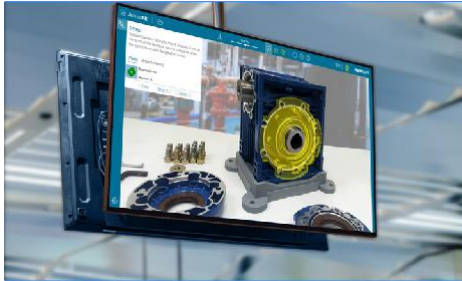
AR system with accuracy and precision to support critical use cases in the production line

Enhance quality, Reduce costs, Save time

- Prevent assembly errors
- Shorten commissioning time
- Shorten onboarding time
- Remote monitoring and control
- Quality and assembly reports
- Easy "Plug & Play" operation

PRODUCTS:

1. SkillReal AssistAR



2. SkillReal Digital Alignment

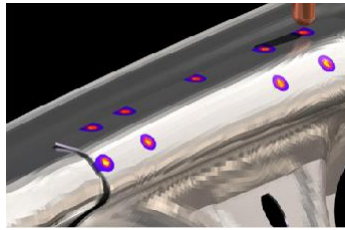


TYPICAL USE CASES PER INDUSTRY



Aerospace and Defense

- Live assembly instruction
- Real time inspection
- Workstation validation
- Live maintenance Instructions



Automotive

- Station layout & alignment
- Weld points inspection
- Virtual prototype
- Robot touchup & calibration



Medical

- Live work instruction
- Accurate measurements
- Real time inspection
- Step by step AR inspection



Line Builders & Machinery

- Line alignment
- "As Built" vs "As designed"
- Line inspection
- Robot calibration

WHYSkillReal?

- An innovative and patented AR technology
- Precise & accurate - 1mm RMS at 5m range

- Highly reliable - works on all objects and surfaces
- Enhancing safety & usability by not mandating AR glasses
- Fully integrated with the PLM systems

SUPPORTED DEVICES

